

3M™ Versaflo™ M-400 Series Helmets

To maintain protection levels, optimise the effective lifetime of the system and avoid the additional cost of replacement, it is extremely important to carry out regular checks and maintenance.

► Before Use

- Inspect for damage and replace if necessary:
 - Outer shroud – ensure it is free from tears and its gasket is inserted properly
 - Inner collar
 - Visor frame to jaw gasket
 - Visor - surround and gasket
 - Helmet shell
 - Forehead seal
 - Head harness
 - Comfort pad/s
- Replace Peel Off visor covers (if used).

► Monthly

- Carry out all the 'Before Use' inspections and create record of this monthly check.

► After Use

- Clean with cloth dampened with a mild solution of water and liquid household soap.
- Disinfect with 3M 105 Wipes.
- Store in a dry, clean area / locker away from direct sunlight, high temperatures and solvents.

► Ordering Consumables, Repair Parts and Accessories

To request a quote or place an order for these items, please contact your 3M Approved Distributor.

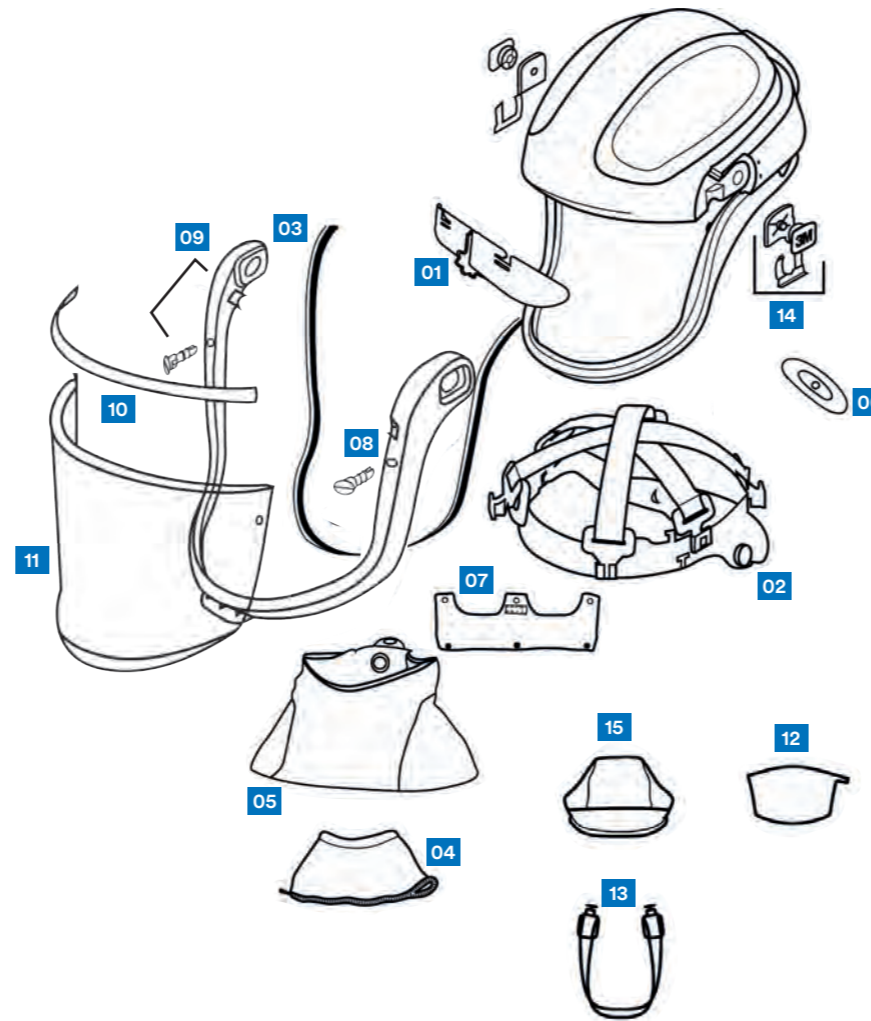
► Further Information and Advice

If you require additional guidance on the Care and Maintenance of your 3M Powered and Supplied Air Equipment, please contact the Helpline or your local 3M representative.

3M Personal Safety Division
3M United Kingdom plc
3M Centre, Cain Road
Bracknell, Berkshire RG12 8HT
United Kingdom
Tel: 0870 60 800 60
www.3M.co.uk/safety

3M Ireland Limited
The Iveagh Building
The Park
Carrickmines
Dublin 18
Tel: 1 800 320 500

Please recycle. Printed in UK.
3M is trademarks of the 3M company.
© 3M 2015. All rights reserved.
J308790



Replace all damaged parts immediately to ensure correct levels of protection.



CHM400CMP
To download this poster please visit:
www.3M.co.uk/maintenancepack or scan the QR code.

For more information on all our products, call 3M Personal Safety Division on 0870 60 800 60 (UK) and 1800 320 500 (Ireland) or visit www.3M.co.uk/safety



Description	Part N°
Versaflo M-406 Respiratory Helmet, with Coated Visor and High Durability Shroud	M-406
Versaflo M-407 Respiratory Helmet, with Coated Visor and Flame Resistant Shroud	M-407
Accessories and spare parts	
01 Replacement Airflow Deflector	M-316
02 Head Suspension	M-350
03 Jaw Gasket	M-441
04 Inner Collar	M-444
05 Flame Resistant Outer Shroud (M-407)	M-447
05 High Durability Outer Shroud (M-406)	M-448
06 Size Reducing Ratchet Comfort Pad	M-956
07 Forehead Comfort Pad	M-957
08 Visor Frame Buttons	M-919
09 Visor Frame Assembly	M-920
10 Visor Gasket	M-921
11 Molten Metal Visor	M-925
11 Coated Visor	M-927
12 Peel-Off Visor Covers	M-928
13 Chin Strap	M-958
14 Visor Pivot Kit	M-960
15 Flame Resistant Headtop Cover	M-972



Distributed by Industrial Scientific Supplies, a division of Camlab Ltd

Camlab Ltd, Norman Way Industrial Estate, Over, Cambridge, CB24 5WE
Telephone: +44 (0)1954 233145
Email: sales@camlab.co.uk
www.industrialscientific.co.uk

@3M_UK_Safety



3M Health & Safety Helpline

Monday - Friday 9 to 5

0870 60 800 60 - UK

1 800 320 500 - IRELAND