

DURAN®

# BOTTLE CAPS & CONNECTION SYSTEMS



PART OF THE DURAN®BOTTLE SYSTEM

Distributed By: Camlab Ltd  
Unit 24, Norman Way Industrial Estate  
Over, Cambridge, CB24 5WE, United Kingdom  
T: +44 (0) 1954 233 110 E: [sales@camlab.co.uk](mailto:sales@camlab.co.uk)



DURAN  
WHEATON  
KIMBLE

Excellence in your hands

# DURAN® BOTTLE CAPS & CONNECTION SYSTEMS

## THE PERFECT MATCH – FROM STANDARD TO SPECIAL

In scientific procedures, nothing should be left to chance. Factors such as functionality, efficiency and cost-effectiveness in laboratories can be affected by apparently simple elements such as bottle caps and connection systems.

DURAN® offers a comprehensive product range of precision closure systems, starting with high-quality standard caps suitable for numerous scientific applications.

Our range also includes identification aids, special closures for sterilization processes, caps made of high performance materials for demanding applications, connection systems, security caps and transportation accessories. DURAN® caps and connection systems fit most DIN standard laboratory bottles made by other manufacturers.

ONE  
DURAN®  
BOTTLE  
SYSTEM

FOR  
ALL  
YOUR  
NEEDS



Find out more:  
[www.duran-bottle-system.com](http://www.duran-bottle-system.com)



## THE EVOLUTION OF THE DURAN® BOTTLE SYSTEM

Starting with the ORIGINAL in 1972, the DURAN® laboratory bottles have continued to evolve to meet the diverse needs and applications of scientists and researchers around the world. The borosilicate glass 3.3 bottles are now available in the most comprehensive range of volumes and formats.



## DURAN® BOTTLE ACCESSORIES

A range of dedicated accessories that work perfectly with the DURAN® laboratory bottles. DURAN® accessories enable practical color coding, product labelling and identification. Most are reusable and long lasting just like the DURAN® bottles.



## DURAN® GL45 BOTTLE CARRYING SYSTEM

Click and Carry! Our latest innovation – a modular bottle carrying system that focuses on the safety and convenience of users in the laboratory. Find out more on page 10



# SELECT THE BEST COMPONENTS FOR YOUR NEEDS

NECK SIZE  
**GL25**

NECK SIZE  
**GL32**

STANDARD



These reliable components are made of food-grade polypropylene (PP) and are suitable for many laboratory applications. Our screw caps and pouring rings are fully compatible with DIN GL bottle threads.

Original  
GL Screw Cap  
Blue, PP, Linerless



Original  
GL Screw Cap  
Blue, PP, Linerless



Original  
Pouring Ring  
Blue, PP



HIGH PERFORMANCE



For more demanding processing conditions, or when the product requires a higher level of protection from the environment or contamination. Ideal for demanding applications in the pharmaceutical industry.

High Temperature  
Screw Cap  
Red, PBT, Cap liner



Aperture  
Screw Cap  
Red, PBT



Premium Cap  
Colorless, PFA,  
Cap liner



PURE Premium  
Screw Cap  
Colorless, PFA,  
Cap liner



High Temperature  
Screw Cap  
Red, PBT, Cap liner



Pouring Ring  
Red, ETFE



Aperture  
Screw Cap  
Red, PBT



STEAM STERILIZATION



Membrane caps are recommended when sterilizing media. These components improve the safety and ease-of-use of the laboratory bottles during autoclaving or hot-air sterilization, and protect the contents from contamination.

Screw Cap  
Membrane Vented  
Blue, PP



Screw Cap  
Membrane Vented  
Blue, PP



CONNECTION



The robust and durable DURAN® tubing connection systems allow the easy transfer of liquids under controlled conditions, reducing the risk of contamination. Connector elements are also available for probes and stirrers.

Multiport Connector Cap  
2-, 3- or 4-ports, PTFE



SECURITY AND TRANSPORTATION

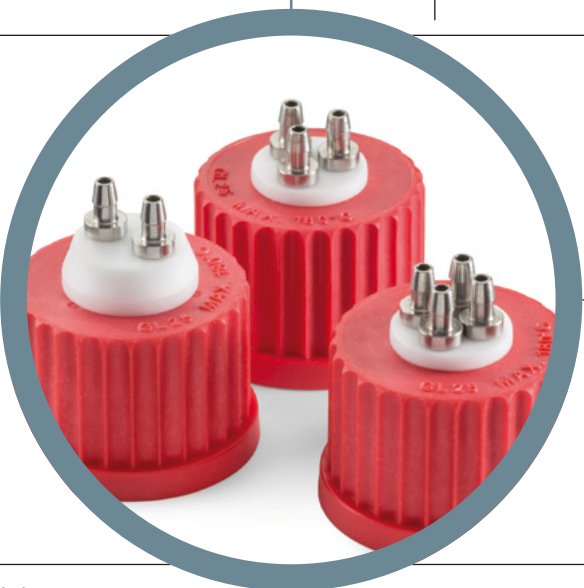


When extra protection is required to ensure the safety of the contents and users during storage or transport. For example, by blocking ultraviolet light, ensuring contents aren't tampered with or making transport easier and safer.

IDENTIFICATION



The accurate identification of samples and reagents is integral to the scientific process. These components provide simple color coding or labelling of laboratory bottles.

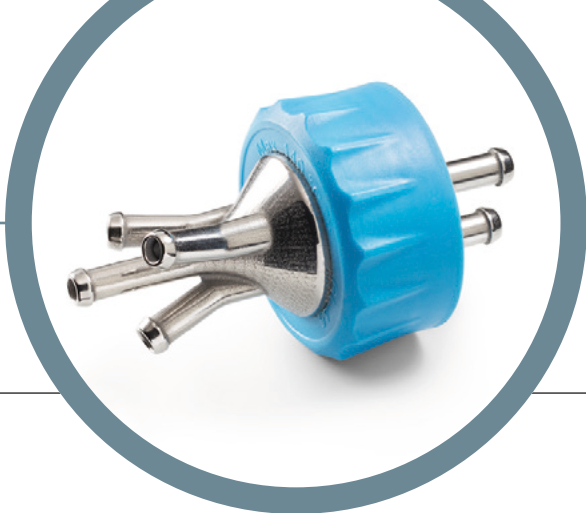


The GL25 Multiport Connector Caps fit the smaller DURAN® bottles and are ideal for adding or sampling liquids. Constructed from food contact safe materials.

PP = Polypropylene PBT = Polybutylene terephthalate  
PFA = Perfluoroalkoxy polymers ETFE = Ethylene-tetrafluoroethylene copolymer PTFE = Polytetrafluoroethylene



NECK SIZE  
GL45



By using an innovative 3D metal printing process, we have optimized the design of the Multiport Connector Cap for liquid transfer applications.

STANDARD	<b>Original GL Screw Cap</b> Blue, PP, Linerless	<b>Original Pouring Ring</b> Blue, PP	<b>YOUTILITY® Screw Cap</b> Cyan, PP, Linerless	<b>YOUTILITY® Pouring Ring</b> Cyan, PP						
HIGH PERFORMANCE	<b>High Temperature Screw Cap</b> Red, PBT, Cap liner	<b>Pouring Ring</b> Red, ETFE	<b>Aperture Screw Cap</b> Red, PBT	<b>Premium Cap</b> Colorless, PFA, Cap liner	<b>Premium Pouring Ring</b> Colorless, PFA	<b>PURE Premium Screw Cap</b> Colorless, PFA, Cap liner	<b>PURE Premium Lip Seal Cap</b> Colorless, PFA, Linerless	<b>Stopper</b> Grey, Bromobutyl rubber	<b>Septum</b> Colorless, PTFE coated Silicone	
STEAM STERILIZATION	<b>Screw Cap Membrane Vented</b> Blue, PP	<b>YOUTILITY® Screw Cap Membrane Vented</b> Cyan, PP	<b>Multiport Connector Cap 1-port</b> Stainless Steel							
CONNECTION	<b>Multiport Connector Cap 2- or 3-ports</b> Stainless Steel	<b>Multiport Connector Cap 4-ports</b> Stainless Steel	<b>Screw Cap 2 Hose Connectors</b> Blue, PP	<b>Multiport Connector Cap 2- or 3-ports</b> Blue, PP	<b>Multiport Connector Cap HPLC 3-port</b> Blue, PTFE	<b>Multiport Connector Cap HPLC 4-port</b> Blue, PP	<b>Screw Cap for pH Sensor</b> Red, PBT	<b>Replacement Cap Liner</b> PTFE coated Silicone	<b>Septum</b> Colorless, Silicone	<b>Stirred Reactor</b>
SECURITY AND TRANSPORTATION	<b>Tamper Evident Screw Caps</b> Yellow or Red, PP, Linerless or Cap liner									
IDENTIFICATION	<b>Original GL Screw Cap</b> Yellow, Green or Grey, PP, Linerless	<b>Pouring Ring</b> Yellow, Green or Grey, PP	<b>YOUTILITY® Bottle Tags</b> Various colors, Silicone	<b>YOUTILITY® Printable Labels</b> , PS						



The DURAN® bromobutyl rubber stopper provides a gas tight seal for all GL45 laboratory bottles. Bromobutyl rubber is essentially impermeable to most gases, and provides a controlled environment inside the glass bottle for oxygen sensitive materials.

PP= Polypropylene    PBT= Polybutylene terephthalate    ETFE= Ethylene-tetrafluoroethylene copolymer  
PTFE= Polytetrafluorethylene    PFA= Perfluoroalkoxy polymers    PS= Polyester

NECK SIZE

GL56

NECK SIZE

GLS 80®

In addition to the benefits of a larger mouth, such as hassle-free filling, emptying, and cleaning, the GLS80®caps have a special fast closing thread.

STANDARD

TILT Screw Cap • White, PP, Linerless



Screw Cap • Blue, PP, Linerless



Pouring Ring • Blue, PP



HIGH PERFORMANCE

The DURAN®TILTsilicone sleeve blocks damaging ultraviolet (UV) light, protects the glass surface from damage, and facilitates safer handling.



Screw Cap • White, PSU, Cap liner



Pouring Ring • White, PTFE



PURE Screw Cap • White, PSU, Cap liner



STEAM STERILIZATION

Screw Cap Membrane Vented • White, PP



Screw Cap Membrane Vented • Blue, PP



CONNECTION

TILT Bottle Top Filter Unit • Clear, PES



TILT Adaptor • White, PTFE  
GL56 to GL45



Multiport ConnectionCap • 4-ports, Blue, PP



Stirred Reactor



ConnectionCap System for Overhead Mixer • PP



SECURITY AND TRANSPORTATION

TILT Light Shield • White, Silicone



IDENTIFICATION

TILT Bottle Tags  
Orange, Yellow, Blue or Purple,  
Silicone



TILT Cap Labels • White, PS



The DURAN®Stirred Reactor is ideal for the widest possible range of mixing processes in laboratories, e.g. mixing liquids or dissolving solids. The variable stirring shaft can be used for 500 ml, 1000 ml and 2000 ml DURAN®GLS80®laboratory bottles and can be driven with standard magnetic stirrers.





# DURAN®GL 45 BOTTLE CARRYING SYSTEM

The new modular Bottle Carrying System fits standard laboratory bottles that have a GL45 neck finish and is compatible with four bottle sizes: 2, 5, 10 and 20 litres. It is ergonomically designed, and offers health & safety benefits to the user and allows easy and safe transport of bottles around the laboratory or production facility. It makes pouring liquids from the larger bottles more comfortable and safer. All materials are fully autoclavable.

## Carrying Handle

- Carrying handle is suitable for bare or gloved hands
- Handstrap is flexible enough to allow pouring

## Tightening Strap

- With indicator arrow
- End modified to prevent unthreading

## Pouring Handle

- Ergonomically shaped
- Anti-slip grip



## Silicone Support Base

- Structural support for base of larger 5, 10 and 20 litre bottles
- Protection of glass bottle base from impact during lifting or handling
- Acts as a spacer to protect glass from contact with Metal Dolly
- Moulded-in holes minimize liquid traps and allow maximum steam penetration during autoclaving



## GL45 Bottle Collar

- The collar is securely attached by pushing down over the GL45 thread with 4 teeth that lock under transfer ring.
- The collar is only removable by cutting – so attachment is 100% secure in use
- A cut line indicator for removal of collar when required

## Horizontal Straps

- Durable stitched construction
- Made from “anti-slip” material



Lot Specific Retrace Code for traceability and certification



## Optional Extra: Metal Dolly

- Stainless steel dolly for 10 or 20 litre bottles (2 sizes only)
- Fully compatible with carrying system
- Easy to clean, crevice-free construction
- Optional handle is available for easier handling

# FOR EASY AND SAFE CARRYING & POURING



## Easy and safe carrying using handle

- Handle attaches at the neck and fully supports the base



## Safe and controlled pouring using handle

- Safer pouring of liquids using a second lower “Pouring Handle” located on the side strap (Available on the 5 and 10 litre carriers only)

Fast and secure tightening of the polypropylene straps with two side strap adjusters for the larger 5, 10 and 20 litre bottles



2 L bottle carrier in 4 colors for color coding



4 sizes available:  
2 L / 5 L / 10 L / 20 L

Find out more:  
[www.duran-bottle-system.com](http://www.duran-bottle-system.com)





DWKLife Sciences GmbH  
Hattenbergstraße 10  
55122 Mainz  
Germany

Phone: +49 6131 - 1445 4131  
Fax: +49 6131 - 1445 4016  
[sales@DWK-LifeSciences.com](mailto:sales@DWK-LifeSciences.com)  
[www.DWK-LifeSciences.com](http://www.DWK-LifeSciences.com)

